



**ALASKA DIVISION OF HOMELAND SECURITY &
EMERGENCY MANAGEMENT**



SITUATION REPORT 21-363 • DECEMBER 29, 2021

Toll-Free 1.800.478.2337

Anchorage Area 907.428.7000

SEOC 907.428.7100

<p><u>SEOC Preparedness Level</u> Level 1 – Normal Operations</p>	<p>http://ready.alaska.gov</p>	<p><u>National Terrorism Advisory System:</u> Read the updated NTAS Bulletin here</p>
<p><u>Maritime Security (MARSEC)</u> Level: 1-Minimum Appropriate Security Measures</p>	<p>WHO Novel Coronavirus Pandemic (COVID-19): 2019 Novel Coronavirus</p>	<p><u>Alaska Military Installation Force Protection Level:</u> FPCON Bravo</p>

(Significant changes from previous situation reports are in red.)

Significant Issues:

The SEOC continues to be actively engaged with communities across the interior region to assist in response and recovery efforts from the recent and continuous snow and ice storms impacting the region.

Threat Level Changes:

None

State of Alaska Department of Health and Social Services (DHSS)

DHSS is now leading the State of Alaska COVID-19 Recovery through Department Operations, supported by SEOC and other state departments as required.

For current COVID-19 information, see:

<https://covid19.alaska.gov/>

<https://www.cdc.gov/coronavirus/2019-ncov/index.html>

NTAS BULLETIN

To read current or expired advisories, click the link below:

<https://www.dhs.gov/national-terrorism-advisory-system>

Travel Alerts and Conditions

For current driving conditions dial 511 or link to <http://511.alaska.gov/>

Barry Arm Landslide / Tsunami Risk

For the latest information on the Barry Arm Landslide and Tsunami risk, click here: [DGGs Barry Arm Landslide and Tsunami Hazard](#)

Recent Earthquakes

USGS Earthquake Information: <http://earthquake.usgs.gov/>

National Tsunami Warning Center: <http://tsunami.gov/>

Alaska Volcanoes

Davidof Alert Level: **Advisory** and Aviation Color Code: **Yellow**

Great Sitkin Alert Level: **Watch** and Aviation Color Code: **Orange**

Pavlof Alert Level: **Watch** and Aviation Color Code: **Orange**

Semisopchnoi Alert Level: **Watch** and Aviation Color Code: **Orange**

For Alaska Volcano updates, go to: <https://www.avo.alaska.edu/>

Air Quality Index (AQI) Advisories

For the most up to date Air Quality Index Advisories:

<http://dec.alaska.gov/Applications/Air/airtoolsweb/Home/Index>

Spills of Oil and Hazardous Substances

The ADEC Spill Prevention and Response page is located at:

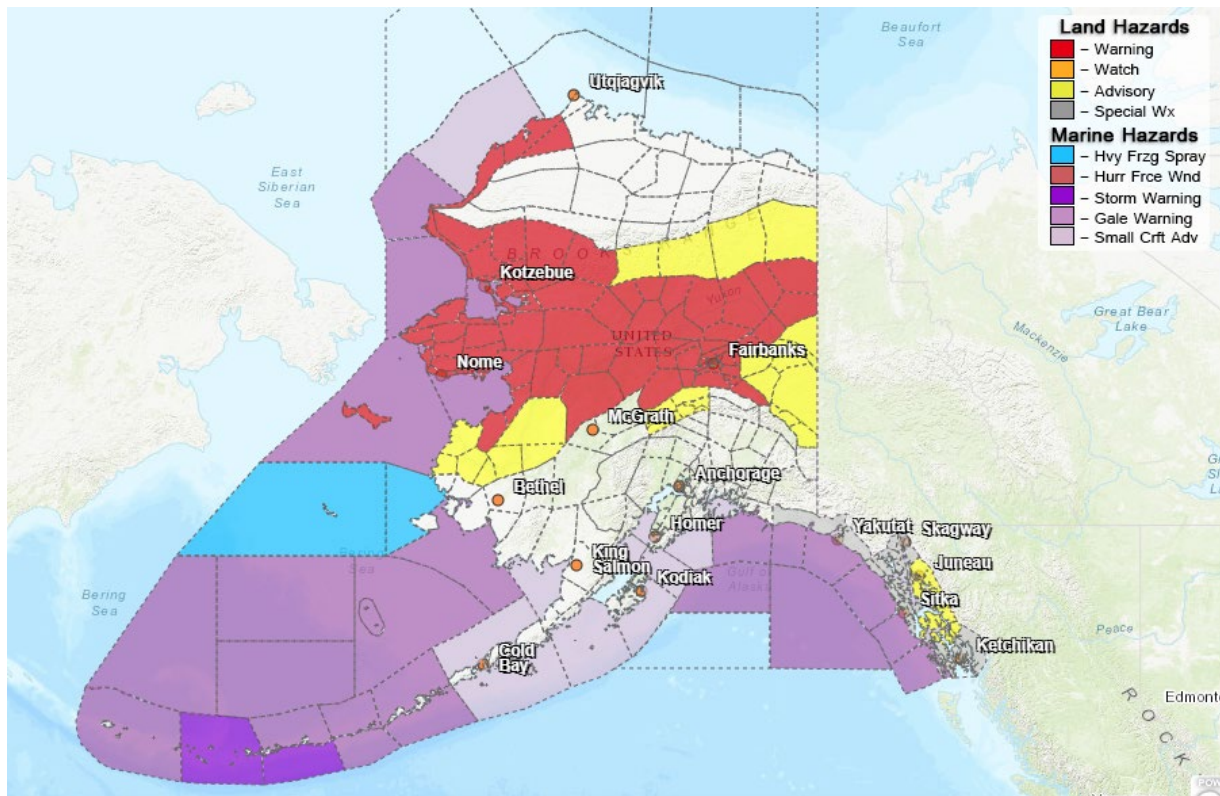
<http://dec.alaska.gov/spar/ppr/spill-information/response/>

Alaska Cyber Security Information

State Employees may sign up for cyber security notifications and alerts at

<https://oit.alaska.gov/security>

Significant Weather:



A large winter storm is currently impacting the west coast. Blizzard warnings have been issued for the Western Arctic Coast, Southern Seward Peninsula, St. Lawrence Island, and the Bering Strait Coast through 9 AM Today. Winds gusting as high as 60-70 MPH have caused white out conditions

with significant snow drifts. Additionally, Winter Storm Warnings have been issued for Kotzebue Sound and the Western Interior for Wednesday. Heavy snow is expected with gusts up to 55-65 MPH, which will cause areas of blowing and drifting snow and lowered visibility.

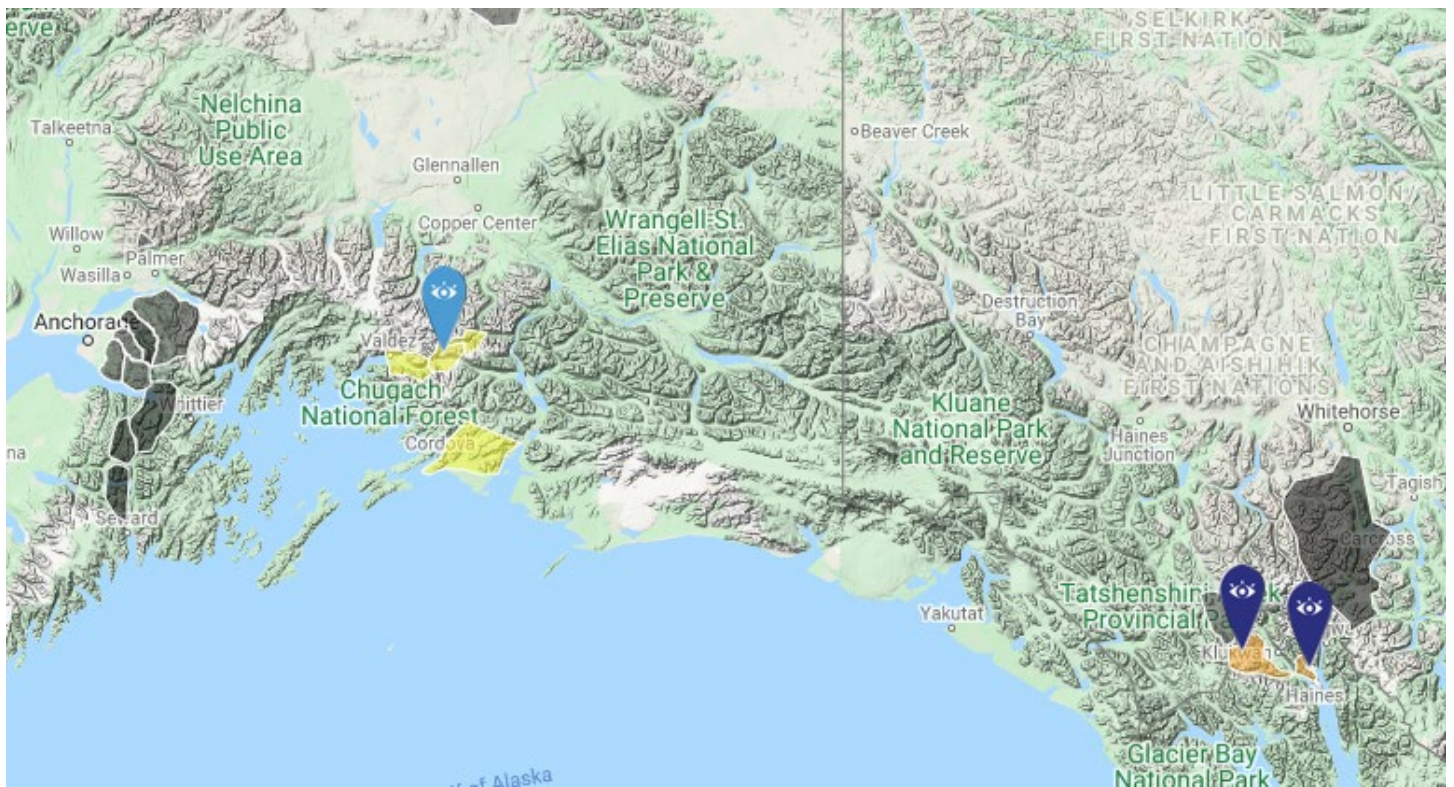
Multiple Winter Storm Warnings, Watches, and Advisories are in effect for most of the Central and Eastern Interior and Alaska Range, including Fairbanks, as this storm progresses eastward through Wednesday and Thursday.

Winter Weather Advisories are also in effect for portions of the Southeast including Juneau, Wrangell and Petersburg through this afternoon, for up to 5 inches of snow expected.

Special Weather Statements have been issued for most of Southeast Alaska for a wintry mix of precipitation Wednesday and the potential for a significant storm on Friday.

For more information and the most current weather, Watches / Warnings / Advisories go to: <http://www.weather.gov/arh>

Avalanche Forecast:



There are areas near Haines with Considerable risk.

There are areas near Valdez, the Richardson Highway and Cordova with Moderate Risk.

Check the Avalanche Forecast Center closest to your area for the most up to date information on avalanche potential. <https://alaskasnow.org> or <https://www.weather.gov/afc/avalancheweather>

The Next Situation Report: will be 30 December 2021. A significant change in the situation or the threat level will prompt an interim report.

This report is posted on the internet at <https://ready.alaska.gov/sitrep>. To register for email distribution, go to <http://list.state.ak.us/mailman/listinfo/dhsem.situation.report>. Direct questions regarding this report to the SEOC at 907-428-7100 or seoc@alaska.gov